

## Title II of the ADA: ADA Facilities Track I



James A. Bostrom  
Deputy Chief  
Disability Rights Section  
U. S. Department of Justice

1

## General Prohibitions Against Discrimination

title II -- § 35.130

No qualified individual with a disability shall, on the basis of disability, be excluded from participation in or be denied the benefits of the services, programs, or activities...

4

## Title II of the ADA: New Construction, Alterations, and Existing Facilities

2

## ADA Requirements Apply...

Access to programs, services,  
or activities...

Buildings and Facilities... new  
construction, alterations,  
additions...

5

## DOJ's Title II Regulations

- 28 CFR Part 35 Part 35 Nondiscrimination on the Basis of Disability in State and Local Government Services
- Includes 2010 ADA Standards

3

## DOJ's 2010 ADA Standards



Appendices B and D to  
36 CFR part 1191  
(2009) -- 2004 ADA  
Guidelines...

and the requirements  
contained in 28 CFR  
Part 35 § 35.151...

6

## 2010 Regulations & Standards at ADA.gov



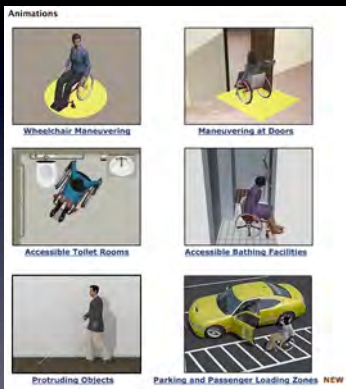
7

## Sample Requirements for Buildings and Facilities

- Building Codes
- Life Safety Codes
- Plumbing Codes
- Other Codes and Local Regulations
- Accessibility Requirements

10

## Video Animations



[www.access-board.gov/guidelines-and-standards/buildings-and-sites/about-the-ada-standards/guide-to-the-ada-standards/single-file-version](http://www.access-board.gov/guidelines-and-standards/buildings-and-sites/about-the-ada-standards/guide-to-the-ada-standards/single-file-version)

8

## Applications for Building Codes and Regulations

- New Construction
- Alterations and Renovations
- Change of Use
- Other Specified Events

11

## Where Do Building Codes Fit In?



9

## Georgia Accessibility Code



12

# International Building Code & ANSI A117.1

2001  
and  
2003  
versions



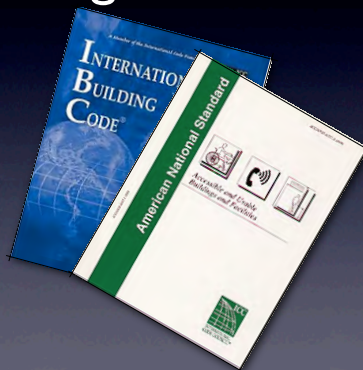
13

## Greatest Accessibility...

- Follow Applicable Building Code Requirement
- Follow ADA Requirement
- Choose Greatest Accessibility...
- Element by Element...

16

## Harmonized with Model Building Codes



14

## Applying the ADA Regulations and ADA Standards

17

## Harmonized?

- Many Provisions the Same or Very Similar...
- Use Only IBC/ANSI? Georgia Accessibility Code? Why Not?
- Role of Local Building Officials

15

## 2010 Standards Applies...

- New Construction
- Alterations
- State and local government facilities -- Physical Changes for Program Accessibility
- Public accommodations -- Readily Achievable Barrier Removal

18



# Title II & III 2010 ADA Standards

## A Kit of Parts...

- § 35.151 or subpart D of 28 CFR part 36
- Chapter 1 (reference standards, defined terms, etc...)
- Chapter 2 Scoping Requirements
- Chapters 3 - 10 Technical Requirements
- Requirements Not Duplicated...

19

## Section 201.2

### Application Based on Building or Facility Use.

Where a site, building, facility, room, or space contains more than one use, each portion shall comply with the applicable requirements for that use.

22

## New Construction

ADA Regulations --  
§35.151(a) and §36.401  
New Construction

...designed and  
constructed...

...facility or part of the  
facility is readily  
accessible to and  
usable by individuals  
with disabilities...



20

## Section 202.2 Additions

Each addition to an existing building or facility shall comply with the requirements for new construction.

Each addition that affects or could affect the usability of or access to an area containing a primary function shall comply with 202.4.

23

## Section 201.1 Scope

All areas of newly designed and newly constructed buildings and facilities and altered portions of existing buildings and facilities shall comply with these requirements.



21

## Section 202.3 Alterations

Where existing elements or spaces are altered, each altered element or space shall comply with the applicable requirements of Chapter 2.

EXCEPTIONS: 1. Unless required by 202.4, where elements or spaces are altered and the circulation path to the altered element or space is not altered, an accessible route shall not be required.

2. In alterations, where compliance with applicable requirements is technically infeasible, the alteration shall comply with the requirements to the maximum extent feasible.

24

## Section 202.4

### Alterations Affecting Primary Function Areas

For title II facilities, read with 35.151(b)(4)  
Path of Travel.

For title III facilities, read with 36.403  
Alterations, Path of Travel

Residential dwelling units are not required  
to comply with 202.4

25

## Existing Buildings and Facilities

202.2 Additions

202.3 Alterations

202.4 ...Primary Function  
Areas

202.5 ...Qualified Historic  
Buildings and Facilities



28

## Historic Facilities



26

## Title II 2010 Standards

### 28 CFR part 35.151 New Construction and Alterations

(a) Design and construction, including the exception for structural impracticability.....	6
(b) Alterations, including alterations to historic properties, path of travel, and primary function .....	6
(c) Accessibility standards and compliance date .....	9
(d) Scope of coverage.....	11
(e) Social service center establishments.....	11
(f) Housing at a place of education.....	11
(g) Assembly areas.....	12
(h) Medical care facilities .....	13
(i) Curb ramps.....	13
(j) Facilities with residential dwelling units for sale to individual owners.....	13
(k) Detention and correctional facilities.....	13

29

## Section 202.5

### Alterations to Qualified Historic Buildings and Facilities

Alterations to a qualified historic building or  
facility shall comply with 202.3 and 202.4.

Read with 28 CFR 35.151

27

## DOJ Regulation Text in 2010 Standards

### Read with...

**232.1 General.** Buildings, facilities, or portions thereof, in which people are detained for penal or correctional purposes, or in which the liberty of the inmates is restricted for security reasons shall comply with the requirements of this part, except as otherwise provided. [See additional requirements at 28 CFR 35.151(k), p. 13.]

**Advisory 232.1 General.** Detention facilities include, but are not limited to, jails, detention centers, and holding cells in police stations. Correctional facilities include, but are not limited to, prisons, reformatories, and correctional centers.

Search for [\[See additional requirements...](#)

30

# 2010 Standards -- 2004 ADAAG

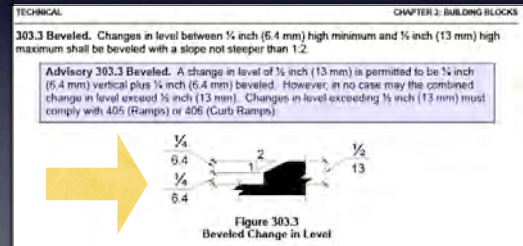
## 2004 ADAAG

Chapter 1: Application and Administration.....	37
Chapter 2: Scoping Requirements.....	50
Chapter 3: Building Blocks.....	104
Chapter 4: Accessible Routes.....	117
Chapter 5: General Site and Building Elements.....	149
Chapter 6: Plumbing Elements and Facilities.....	159
Chapter 7: Communication Elements.....	186
Chapter 8: Special Rooms, Spaces, and Elements.....	202
Chapter 9: Built-in Elements.....	219
Chapter 10: Recreational Facilities.....	224

31

# 2010 Standards

Figures provided for informational purposes only -- must read text... 104.3



34

## 2010 Standards 2004 ADAAG Structure and Format

CHAPTER 1: APPLICATION AND ADMINISTRATION

CHAPTER 2: SCOPING REQUIREMENTS

CHAPTERS 3 - 10: TECHNICAL REQUIREMENTS

32

## 2010 ADA Standards

General Guidance:

Look for Chapter 2 Requirements to Match Up with Requirements from Chapters 3 - 10

206.4 Entrances with 404...

35

## 2010 Standards

- Advisory text is included within the text after the provision
- Advisory Language NOT enforceable

206.7.9 Team or Player Seating. Platform lifts shall be permitted to provide accessible routes to team or player seating areas serving areas of sport activity.

Advisory 206.7.9 Team or Player Seating. While the use of platform lifts is allowed, ramps are recommended to provide access to player seating areas serving an area of sport activity.

33

## 2010 ADA Standards Example -- Parking Spaces

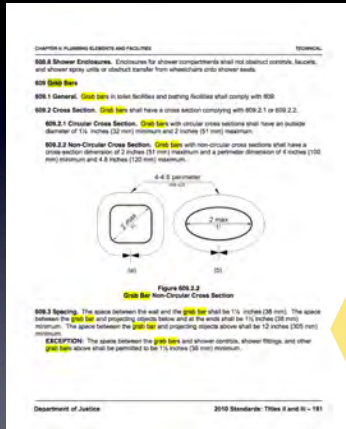
Scoping is provided by 208 Parking Spaces (page 67)

Technical specifications are in 502 Parking Spaces (page 149)

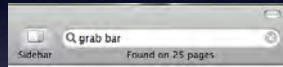
36



## Searching -- 2010 Standards



### Grab Bar



37

## Maximum Slope

403.3 Slope. The running slope of walking surfaces shall not be steeper than 1:20. The cross slope of walking surfaces shall not be steeper than 1:48.

405.2 Slope. Ramp runs shall have a running slope not steeper than 1:12.

405.3 Cross Slope. Cross slope of ramp runs shall not be steeper than 1:48.

40

## Accessible Route 206 and Chapter 4



38

## 405.2 Exception

EXCEPTION: In existing sites, buildings, and facilities, ramps shall be permitted to have running slopes steeper than 1:12 complying with Table 405.2 where such slopes are necessary due to space limitations.

Table 405.2 Maximum Ramp Slope and Rise for Existing Sites, Buildings, and Facilities

Slope <sup>1</sup>	Maximum Rise
Steeper than 1:10 but not steeper than 1:8	3 inches (75 mm)
Steeper than 1:12 but not steeper than 1:10	6 inches (150 mm)

<sup>1</sup> A slope steeper than 1:8 is prohibited.

41

## Maximum Slope

403.3 Slope. The running slope of walking surfaces shall not be steeper than 1:20. The cross slope of walking surfaces shall not be steeper than 1:48.

405.2 Slope. Ramp runs shall have a running slope not steeper than 1:12.

405.3 Cross Slope. Cross slope of ramp runs shall not be steeper than 1:48.

39

## Slope and Tolerances

Maximum Running Slope:  
1:12 -- 8.33% -- 4.76 degrees

Maximum Cross Slope:  
1:48 -- 2.08% -- 1.19 degrees

104.1.1 Construction and Manufacturing Tolerances. All dimensions are subject to conventional industry tolerances except where the requirement is stated as a range with specific minimum and maximum end points.

42

# Section 206 Accessible Routes

## 206.3 Location

Accessible routes shall coincide with or be located in the same area as general circulation paths. Where circulation paths are interior, required accessible routes shall also be interior.

43

## Alterations -- Entrance



46

## Where's the Accessible Route?



44

## Scoping

### 202.3.1 Prohibited Reduction in Access.

An alteration that decreases or has the effect of decreasing the accessibility of a building or facility below the requirements for new construction at the time of the alteration is prohibited.

### 206.3 Location.

Accessible routes shall coincide with or be located in the same area as general circulation paths. Where circulation paths are interior, required accessible routes shall also be interior.

47

## 206.3 Location



45

## New Restaurant



48



## Alterations & New...

206.2.5 Restaurants and Cafeterias. In restaurants and cafeterias, an accessible route shall be provided to all dining areas, including raised or sunken dining areas, and outdoor dining areas.

Exception 2. In alterations, an accessible route shall not be required to existing raised or sunken dining areas, or to all parts of existing outdoor dining areas where the same services and decor are provided in an accessible space usable by the public and not restricted to use by people with disabilities.

49

## Accessible Parking 208 & 502



52

## Existing Gate



50

## Accessible Parking: 208.3 Location

**208.3 Location.** Parking facilities shall comply with 208.3

**208.3.1 General.** Parking spaces complying with 502 that serve a particular building or facility shall be located on the **shortest accessible route from parking to an entrance** complying with 206.4.

53

## Replacement Gate...



51

## Accessible Parking: 208.3 Location

Where parking serves more than one accessible entrance, parking spaces complying with 502 shall be dispersed and located on the **shortest accessible route to the accessible entrances**.

In parking facilities that do not serve a particular building or facility, parking spaces complying with 502 shall be located on the **shortest accessible route to an accessible pedestrian entrance** of the parking facility.

54

## Wide Access Aisle



55

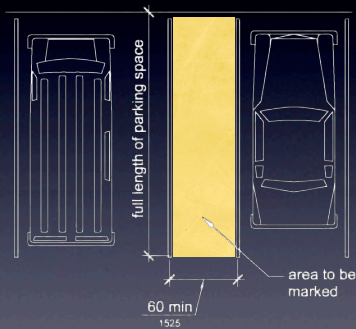
## Chapter 3: Building Blocks

- 302 Floor or Ground Surfaces
- 303 Changes in Level
- 304 Turning Space
- 305 Clear Floor or Ground Space
- 306 Knee and Toe Clearance
- 307 Protruding Objects
- 308 Reach Ranges
- 309 Operable Parts

58

## Five-foot Access Aisle

Exception to 502.2 allows van spaces to be min. 96 inches wide with a min. 96 inch wide access aisle



Width of car spaces = 96 inches minimum

56

## Applying Building Blocks



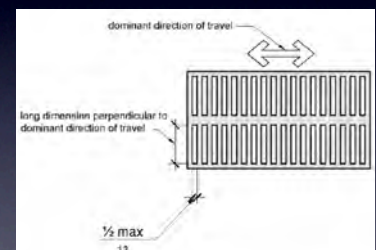
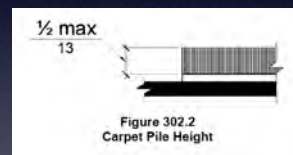
59

## Parking Space Sign Repair



57

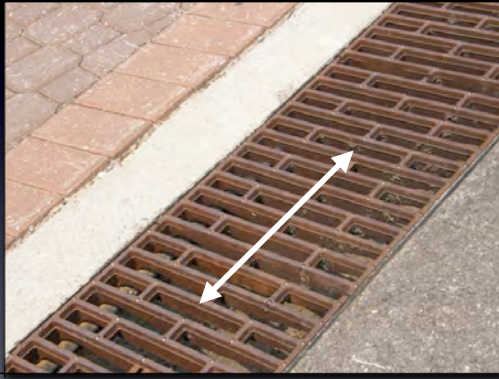
## 302 Floor or Ground Surfaces



60



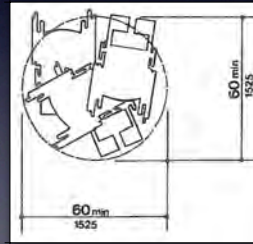
## Gratings on Accessible Routes



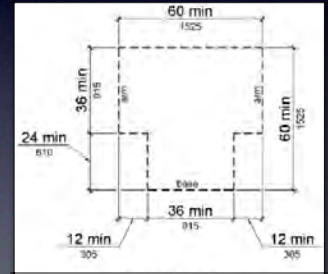
61

## 304 Turning Spaces

304.3.1  
60 inch min circle



304.3.2  
60 inch min T-space



64

## 303 Changes in Level

$\frac{1}{4}$  max  
6.4

Figure 303.2  
Vertical Change in Level

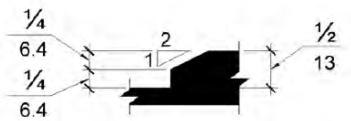


Figure 303.3  
Beveled Change in Level

62

## 305 Clear Floor or Ground Space

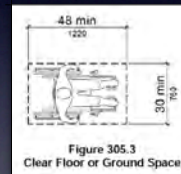


Figure 305.3  
Clear Floor or Ground Space

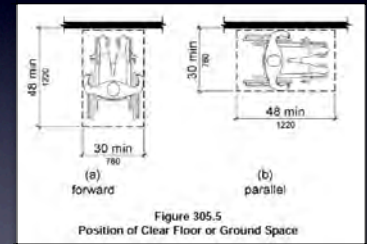


Figure 305.5  
Position of Clear Floor or Ground Space

65

## Ramp Over Electrical Cover



63

## Alcoves

305.7 Maneuvering Clearance. Where a clear floor or ground space is located in an alcove or otherwise confined on all or part of three sides, additional maneuvering clearance shall be provided in accordance with 305.7.1 and 305.7.2.

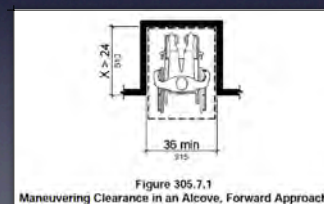


Figure 305.7.1  
Maneuvering Clearance in an Alcove, Forward Approach

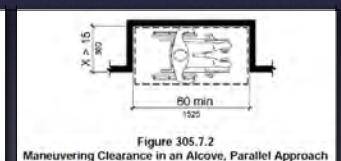


Figure 305.7.2  
Maneuvering Clearance in an Alcove, Parallel Approach

66

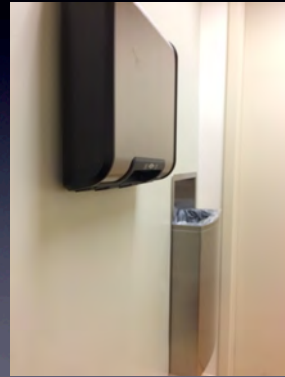


## Alcove?



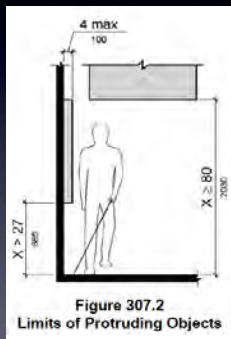
67

## Surface Mount Hand Dryer



70

## 307 Protruding Objects



68

## Detectable Rail



71

## Recessed Hand Dryer



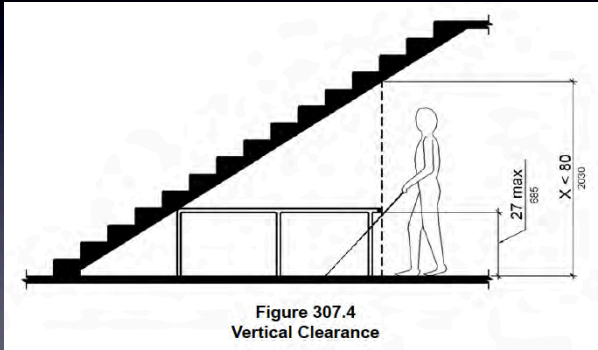
69

## Wing Walls at Wall-Mounted Fountains



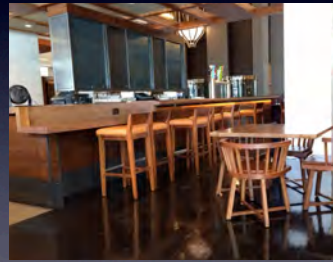
72

## 307 Protruding Objects



73

## Dining and Work Surfaces



76

## Hazard?



74

## Dining and Work Surfaces

206.2.5 Restaurants and Cafeterias. In restaurants and cafeterias, an accessible route shall be provided to all dining areas, including raised or sunken dining areas, and outdoor dining areas.

77

## Detectable Surface?



75

## Dining and Work Surfaces

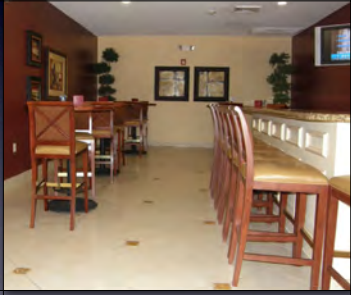
226.1 General. Where dining surfaces are provided for the consumption of food or drink, at least 5 percent of the seating spaces and standing spaces at the dining surfaces shall comply with 902. In addition, where work surfaces are provided for use by other than employees, at least 5 percent shall comply with 902.

226.2 Dispersion. Dining surfaces and work surfaces required to comply with 902 shall be dispersed throughout the space or facility containing dining surfaces and work surfaces.

78

## Dining and Work Surfaces

### Fixed and Non-Fixed



79

## Other Tables and Seating



82

## Dining Tables



Pedestal in clear floor space



Provide accessible table

80

## Questions

?

83

## Bars



81